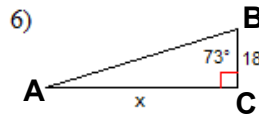
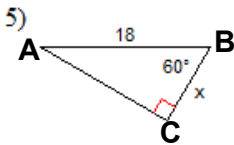
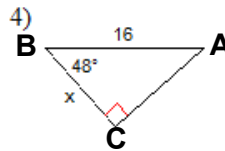
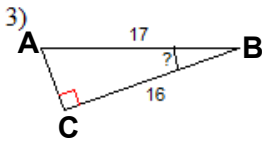
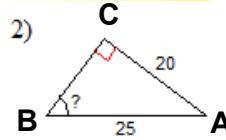
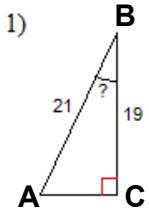


7.7 Solving RIGHT Triangles

Soh Cah Toa

Solve the RIGHT Triangles. **ANGLES: Round to the nearest DEGREE.**



1. $m\angle B \approx 25^\circ$ $m\angle A \approx 65^\circ$ $AC \approx 8.9$
2. $m\angle B \approx 53^\circ$ $m\angle A \approx 37^\circ$ $BC = 15$
3. $m\angle B \approx 20^\circ$ $m\angle A \approx 70^\circ$ $AC \approx 5.7$
4. $m\angle A = 42^\circ$ $AC \approx 11.9$ $BC \approx 10.7$
5. $m\angle A = 30^\circ$ $AC \approx 15.6$ $BC = 9$
6. $m\angle A = 17^\circ$ $AC \approx 58.9$ $AB \approx 61.6$